

**Legend:**  
 Bellrock Wind Farm Development Area  
 Zone of Influence

1	31/03/2026	FINAL	DL	SA	BMcG
REV	DATE	STATUS	DRW	CHK	APR
Coordinate System: WGS 1984 UTM Zone 30N					
Sources: Esri, TomTom, Garmin, FAO, NOAA, USGS, © OpenStreetMap contributors, and the GIS User Community, © Haskoning UK Ltd, 2026.					
Scale @ A3 1:1,000,000					

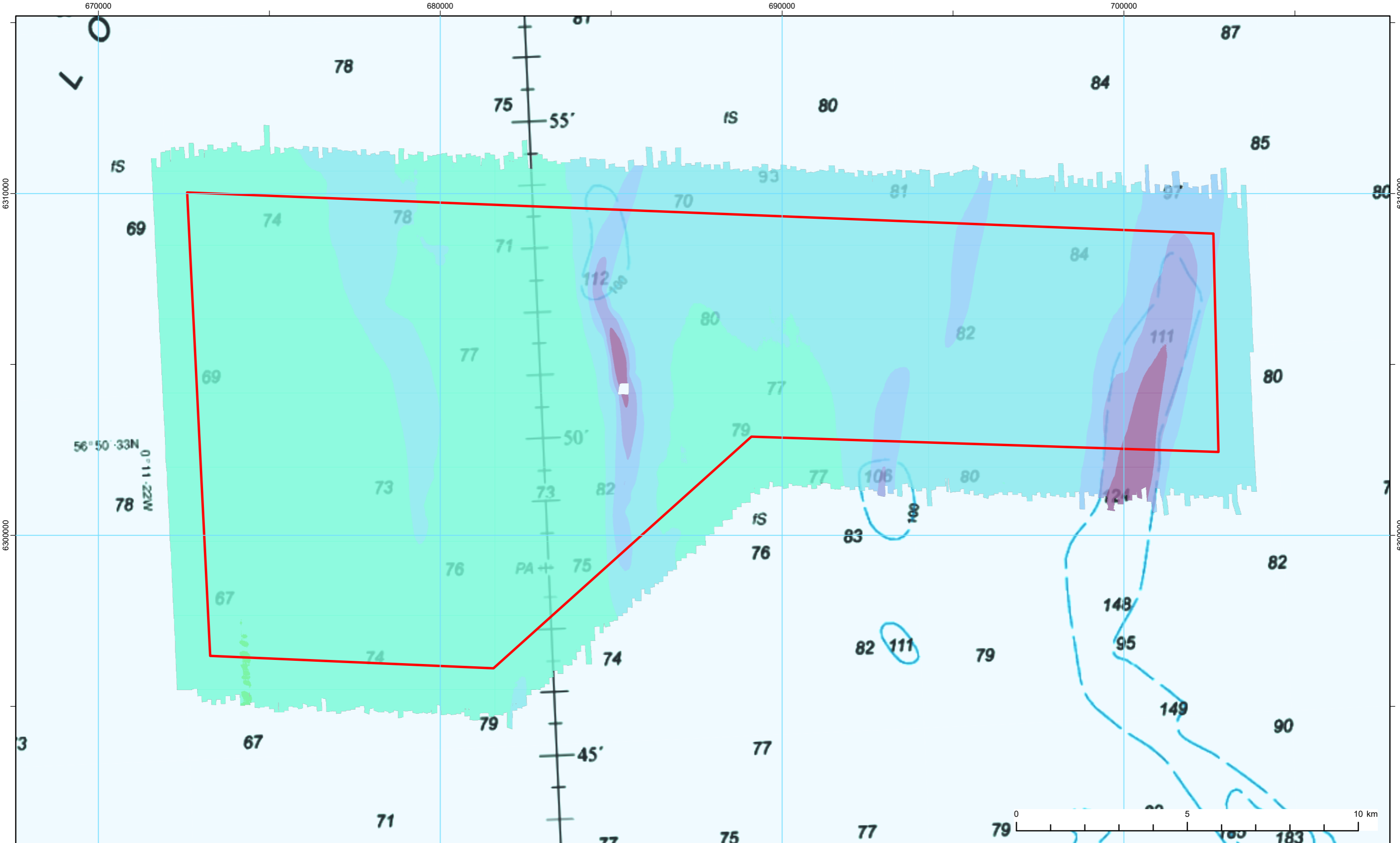
Figure Title:  
**Marine Geology, Oceanography and Physical Processes Study Area**

Project:  
 Bellrock Wind Farm Development Area (WFDA)

Report:  
 EIA Report  
 Chapter 6: Marine Geology, Oceanography and Physical Processes

Drawing No.: RHDV\_BEL\_CST\_REP\_0003\_060

**Figure 6.1**



Legend:

- Bellrock Wind Farm Development Area

**Multibeam Echo Sounder (MBSE) bathymetry 1 m**

- 120 <
- 110 - 120
- 100 - 110
- 90 - 100
- 80 - 90
- 70 - 80
- 60 - 70

REV	DATE	STATUS	DRW	CHK	APR
1	31/03/2026	FINAL	DL	SA	BMCG

Coordinate System: WGS 1984 UTM Zone 30N

Sources: Esri, TomTom, Garmin, FAO, NOAA, USGS, © OpenStreetMap contributors, and the GIS User Community © Haskoning UK Ltd, 2026.

Scale @ A3  
1:100,000

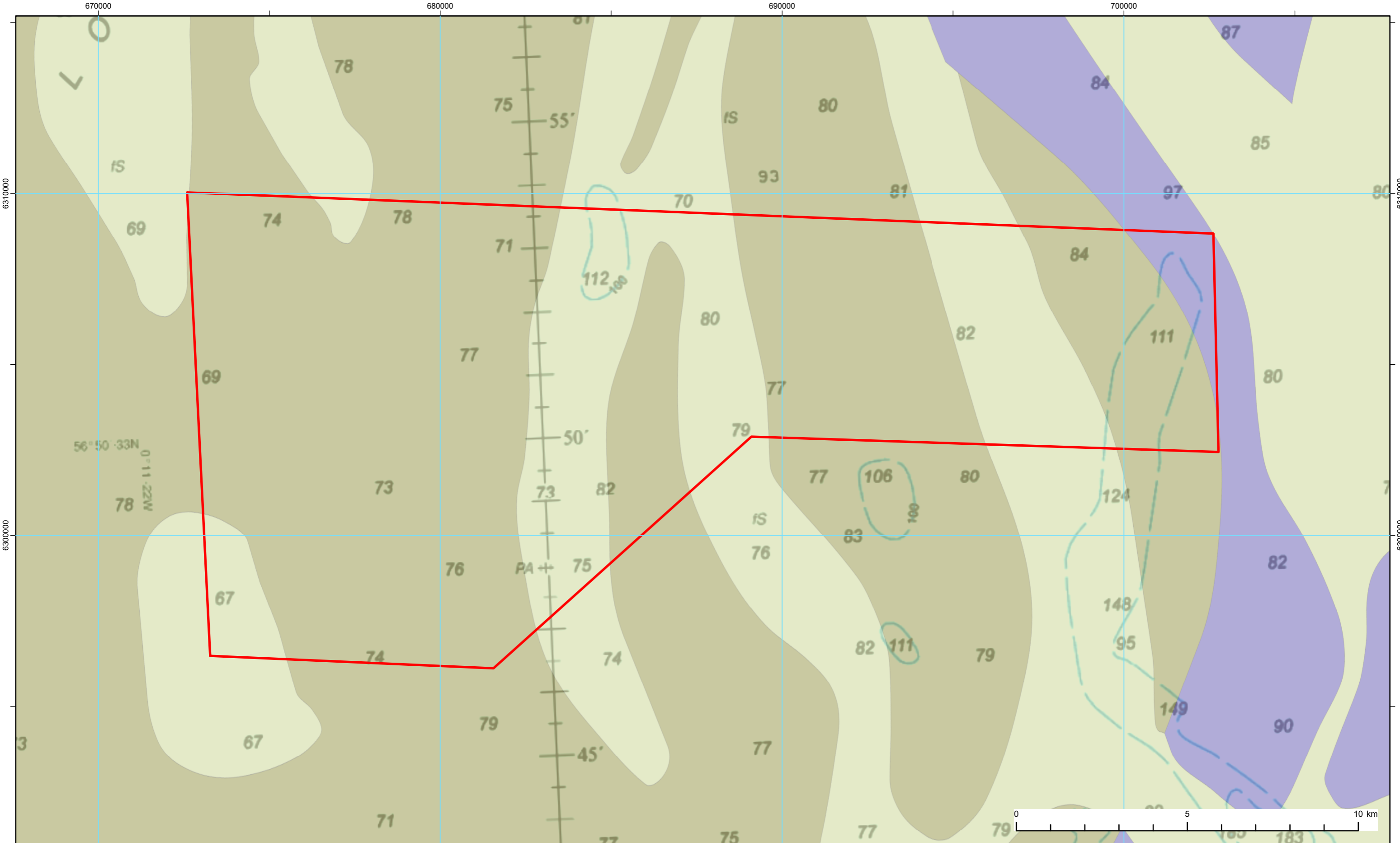
Figure Title:  
**Bathymetry of the Bellrock Wind Farm Development Area**

Project:  
Bellrock Wind Farm Development Area (WFDA)

Report:  
EIA Report  
Chapter 6: Marine Geology, Oceanography and Physical Processes

Drawing No.: RHDV\_BEL\_CST\_REP\_0003\_054

**Figure 6.2**



**Legend:**

- Bellrock Wind Farm Development Area

**Quaternary Lithologies**

- Firm to hard interbedded
- Sand and gravel
- Undifferentiated

1	31/03/2026	FINAL	DL	SA	BMCG
REV	DATE	STATUS	DRW	CHK	APR
Coordinate System: WGS 1984 UTM Zone 30N					
Source: Esri, TomTom, Garmin, FAO, NOAA, USGS, © OpenStreetMap contributors, and the GIS User Community, Contains British Geological Survey materials © UKRI 2025. © Haskoning UK Ltd, 2026.					
Scale @ A3			1:100,000		

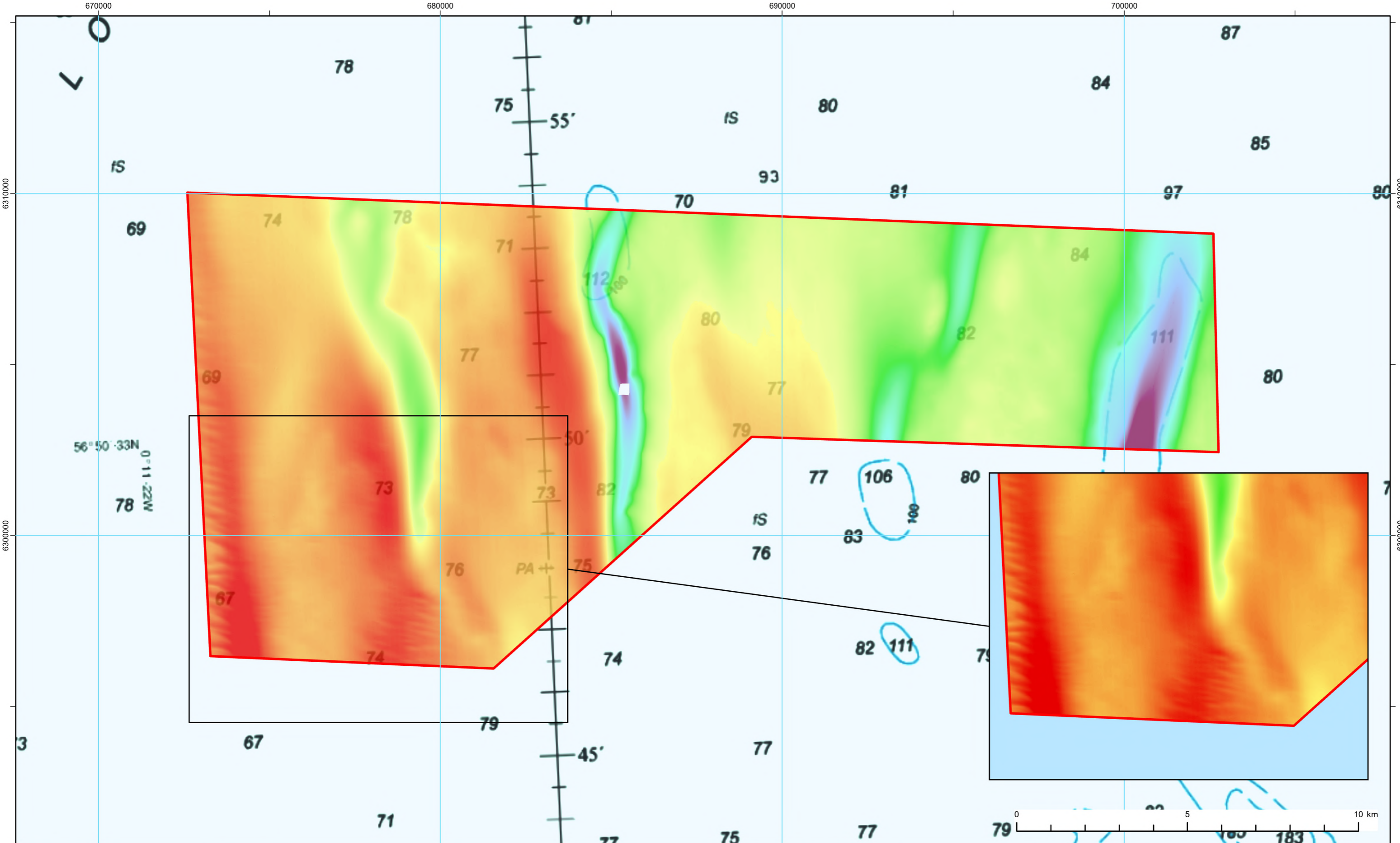
Figure Title:  
**Shallow (Quaternary) Geology of the Bellrock Wind Farm Development Area**

Project: Bellrock Wind Farm Development Area (WFDA)

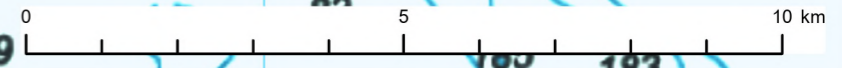
Report: EIA Report Chapter 6: Marine Geology, Oceanography and Physical Processes

Drawing No.: RHDV\_BEL\_CST\_REP\_0003\_055

**Figure 6.3**



56° 50' 33N  
0° 11' 22W



Legend:

- Bellrock Wind Farm Development Area

**Multibeam Echo Sounder (MBSE) bathymetry 1 m**

**Value**

- 69.5238
- 122.327

REV	DATE	STATUS	DRW	CHK	APR
1	31/03/2026	FINAL	DL	SA	BMCG

Coordinate System: WGS 1984 UTM Zone 30N

Source: Esri, Intermap, NASA, NGA, USGS, Sources: Esri, TomTom, Garmin, FAO, NOAA, USGS, © OpenStreetMap contributors, and the GIS User Community © Haskoning UK Ltd, 2026.

Scale @ A3  
1:100,000

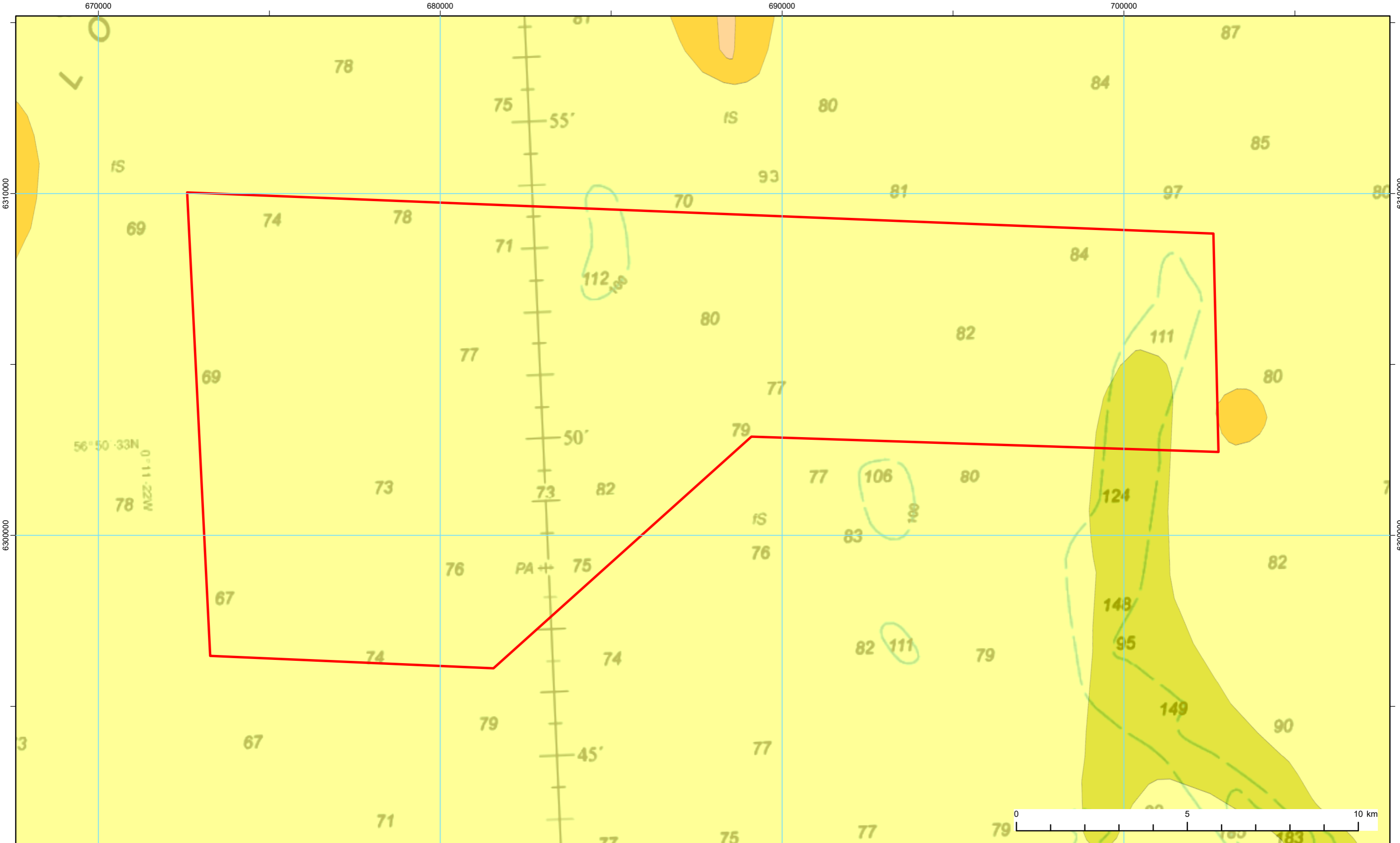
Figure Title:  
**Examples of Sand Waves and Megaripples within the Bellrock Wind Farm Development Area**

Project: Bellrock Wind Farm Development Area (WFDA)

Report: EIA Report Chapter 6: Marine Geology, Oceanography and Physical Processes

Drawing No.: RHDV\_BEL\_CST\_REP\_0003\_069

**Figure 6.4**



**Legend:**

- Bellrock Wind Farm Development Area
- Seabed Sediments**
- Gravelly sand
- Muddy sand
- Sand
- Slightly gravelly sand

1	31/03/2026	FINAL	DL	SA	BMCG
REV	DATE	STATUS	DRW	CHK	APR
Coordinate System: WGS 1984 UTM Zone 30N					
Source: Esri, TomTom, Garmin, FAO, NOAA, USGS, © OpenStreetMap contributors, and the GIS User Community, © British Geological Survey (BGS), UKRI. Contains Ordnance Survey data © Crown copyright and database rights 2020. © Haskoning UK Ltd, 2026.					
Scale @ A3			1:100,000		

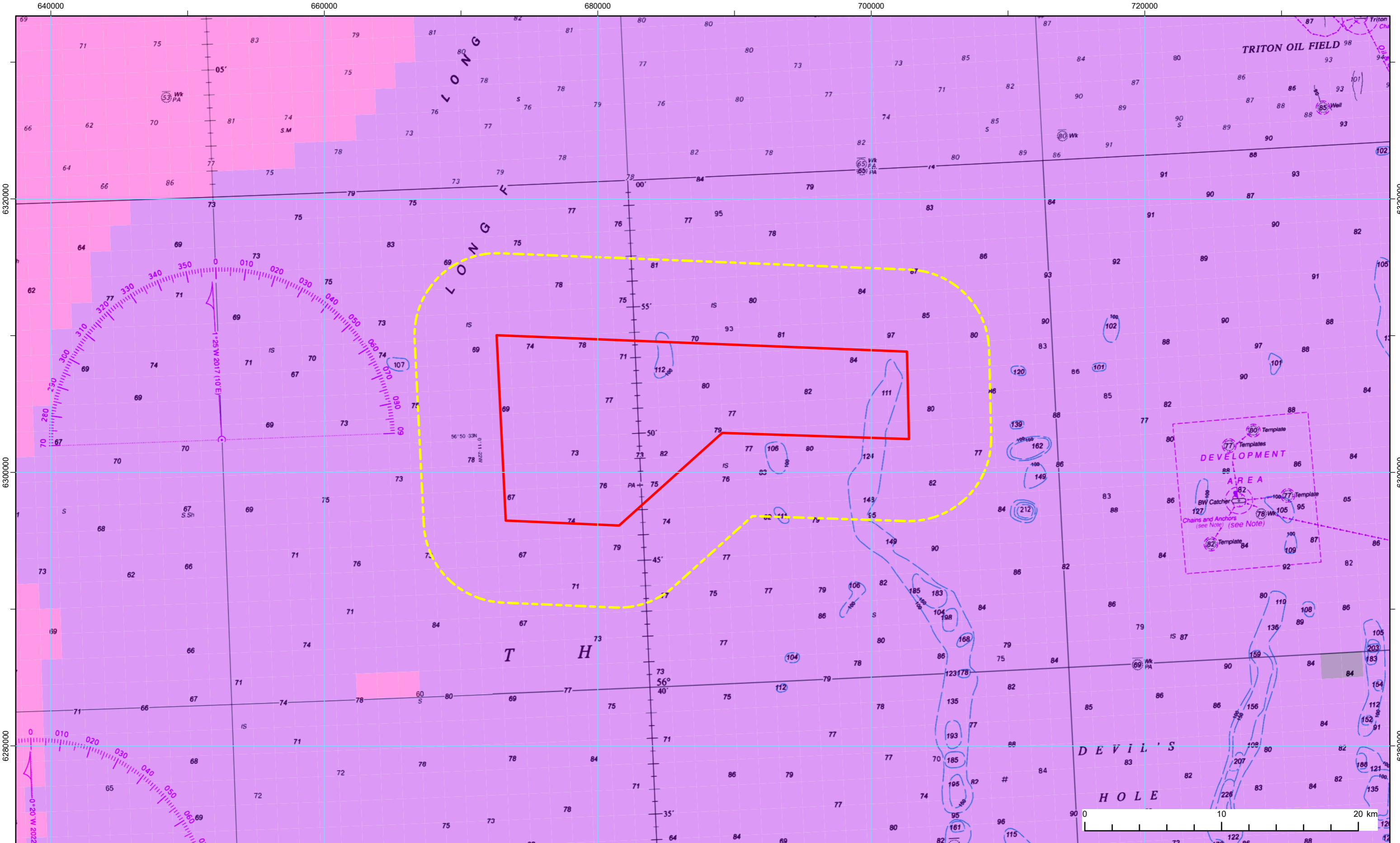
Figure Title: **Seabed Sediments of the Bellrock Wind Farm Development Area**

Project: Bellrock Wind Farm Development Area (WFDA)

Report: EIA Report Chapter 6: Marine Geology, Oceanography and Physical Processes

Drawing No.: RHDV\_BEL\_CST\_REP\_0003\_056

**Figure 6.5**



**Legend:**

- Bellrock Wind Farm Development Area
- Zone of Influence

**Mean Spring Peak Flow (m/s)**

- 0.11 - 0.25
- 0.26 - 0.50
- 0.51 - 0.75

1	31/03/2026	FINAL	DL	SA	BMCG
REV	DATE	STATUS	DRW	CHK	APR
Coordinate System: WGS 1984 UTM Zone 30N					
Source: Esri, TomTom, Garmin, FAO, NOAA, USGS, © OpenStreetMap contributors, and the GIS User Community, © British Geological Survey (BGS), UKRI. Contains Ordnance Survey data © Crown copyright and database rights 2020. Tidal ellipse data (ABPmer, 2008). © Haskoning UK Ltd, 2026.					
Scale @ A3			1:250,000		

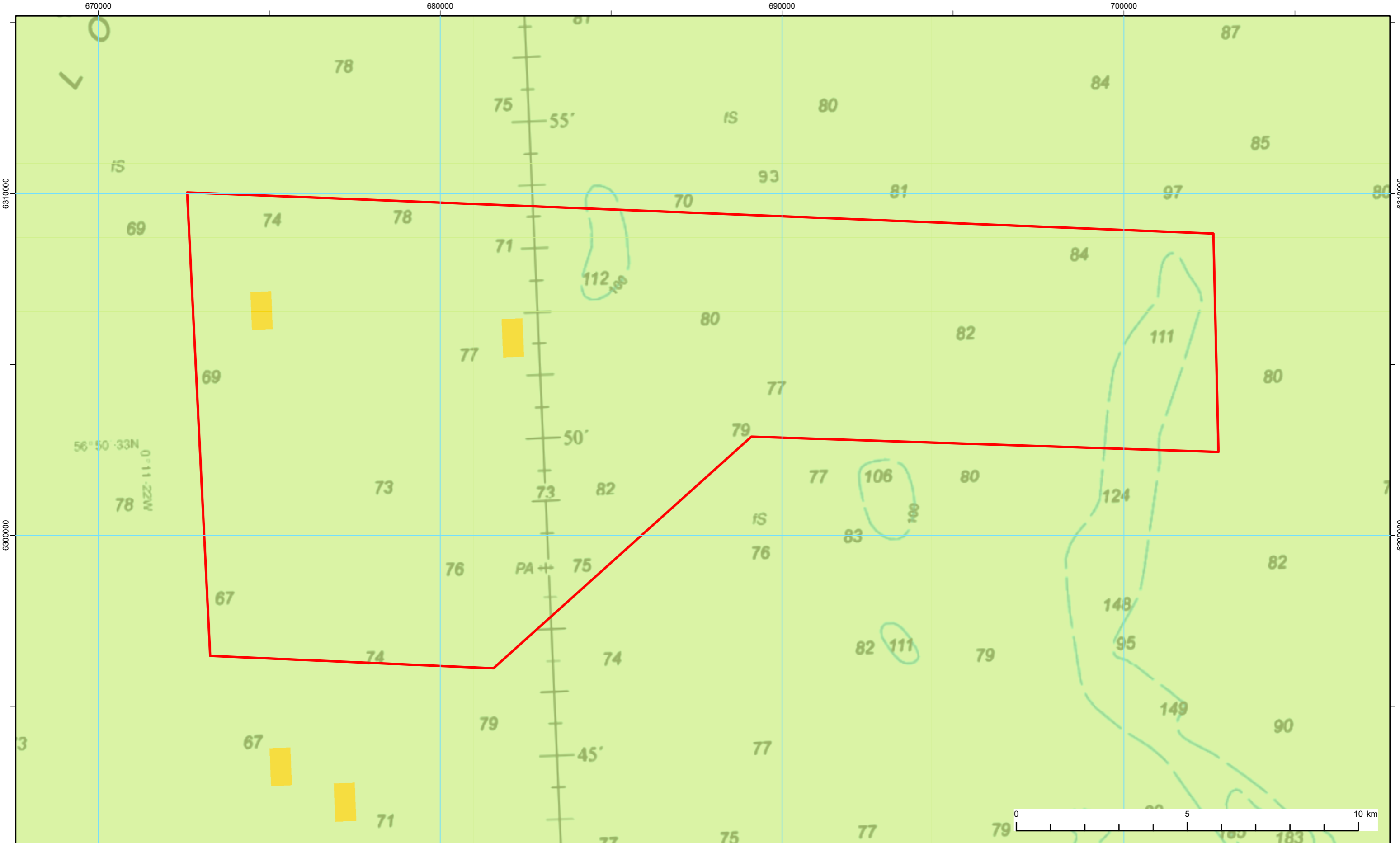
Figure Title:  
**Peak Flow for the Mean Spring Tide and Tidal Ellipses across the Bellrock Wind Farm Development Area**

Project: Bellrock Wind Farm Development Area (WFDA)

Report: EIA Report Chapter 6: Marine Geology, Oceanography and Physical Processes

Drawing No.: RHDV\_BEL\_CST\_REP\_0003\_057

**Figure 6.6**



Legend:

- Bellrock Wind Farm Development Area

**Average suspended sediment concentrations (mg/l)**

- 0.601 - 0.8
- 0.801 - 1

REV	DATE	STATUS	DRW	CHK	APR
1	31/03/2026	FINAL	DL	SA	BMCG

Coordinate System: WGS 1984 UTM Zone 30N

Source: Esri, TomTom, Garmin, FAO, NOAA, USGS, © OpenStreetMap contributors, and the GIS User Community, © British Geological Survey (BGS), UKRI. Contains Ordnance Survey data © Crown copyright and database rights 2025. © Haskoning UK Ltd, 2026.

Scale @ A3  
1:100,000

Figure Title:  
**Average Suspended Sediment Concentration Across the Bellrock Wind Farm Development Area**

Project: Bellrock Wind Farm Development Area (WFDA)

Report: EIA Report Chapter 6: Marine Geology, Oceanography and Physical Processes

Drawing No.: RHDV\_BEL\_CST\_REP\_0003\_058

**Figure 6.7**



**Legend:**

- Bellrock Wind Farm Development Area
- Annex I Reefs
- Annex I Sandbanks

1	31/03/2026	FINAL	DL	SA	BMCG
REV	DATE	STATUS	DRW	CHK	APR
Coordinate System: WGS 1984 UTM Zone 30N					
Source: Esri, TomTom, Garmin, FAO, NOAA, USGS, © OpenStreetMap contributors, and the GIS User Community, © British Geological Survey (BGS), UKRI. Contains Ordnance Survey data © Crown copyright and database rights 2025. © Haskoning UK Ltd, 2026.					
Scale @ A3			1:700,000		

Figure Title:  
**Annex 1 Habitat Locations Relative to the Bellrock Wind Farm Development Area**

Project: Bellrock Wind Farm Development Area (WFDA)

Report: EIA Report Chapter 6: Marine Geology, Oceanography and Physical Processes

Drawing No.: RHDV\_BEL\_CST\_REP\_0003\_059

**Figure 6.8**