

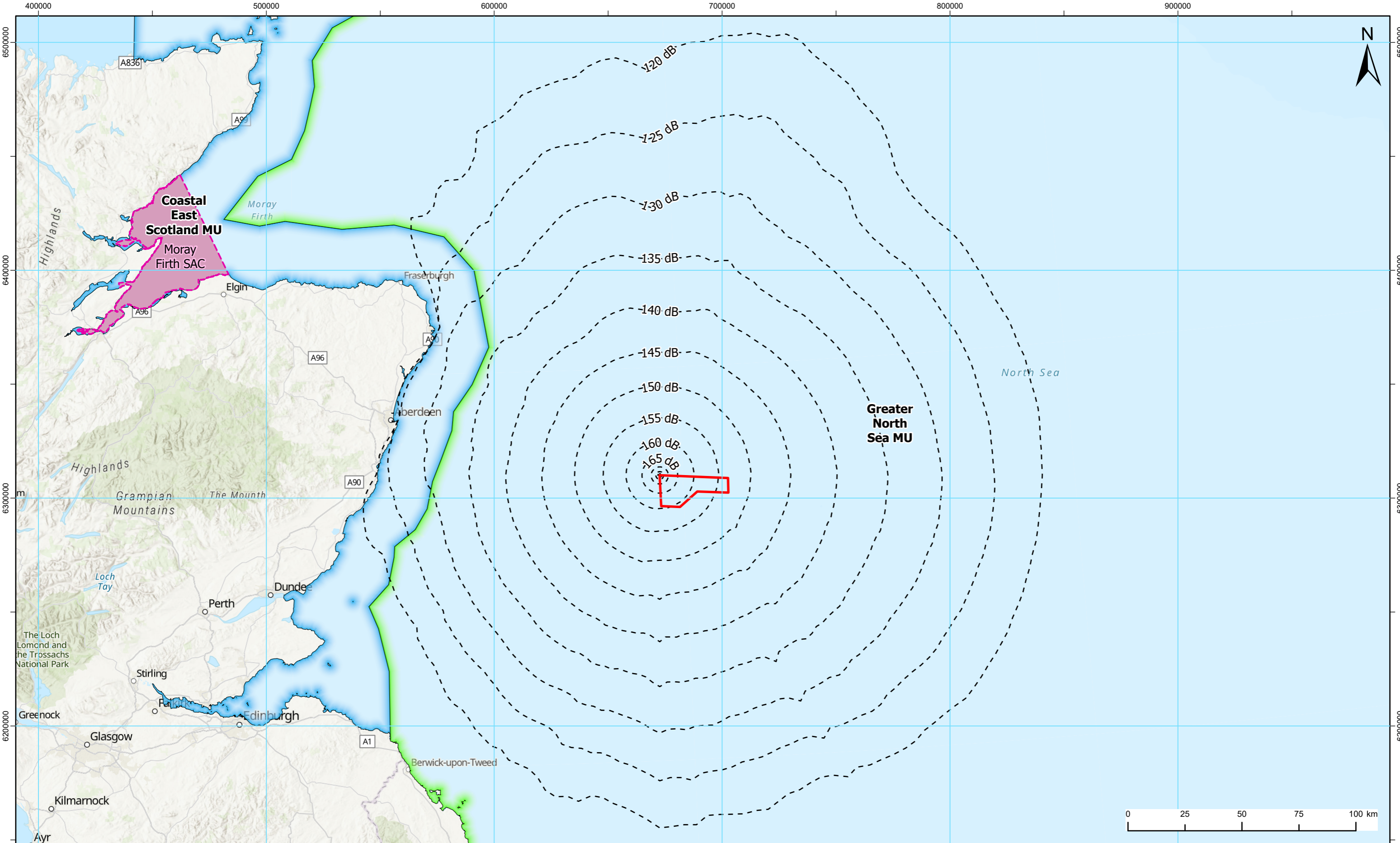
- Legend:**
- Bellrock Wind Farm Development Area
  - BelTLP E Unwtd SELs (5 dB)
  - Southern North Sea Special Area of Conservation (Summer Area)
  - Harbour Porpoise Management Units (MU)

1	31/03/2026	Final	DL	SA	BMCG
REV	DATE	STATUS	DRW	CHK	APR
Coordinate System: WGS 1984 UTM Zone 30N					
Source: Esri, TomTom, Garmin, FAO, NOAA, USGS, © OpenStreetMap contributors, and the GIS User Community, Esri, USGS, © Haskoning UK Ltd, 2026.					
Scale @ A3			1:1,750,000		

**Figure Title:** Contour Plots for Harbour Porpoise as a Result of Concurrent Installation of a Driven Pile at the NW Corner and E-midpoint (3,000 kJ) of the Bellrock Wind Farm Development Area

Project: Bellrock Wind Farm Development Area (WFDA)      Report: EIA Report Chapter 9: Marine Mammals

Drawing No.: RHDV\_BEL\_CST\_REP\_0003\_070      **Figure 9.1**



**Legend:**

- Bellrock Wind Farm Development Area
- BelTLP NW Unwtd SELs (5 dB)
- Moray Firth Special Area of Conservation

**Bottlenose Dolphin Management Units (MU)**

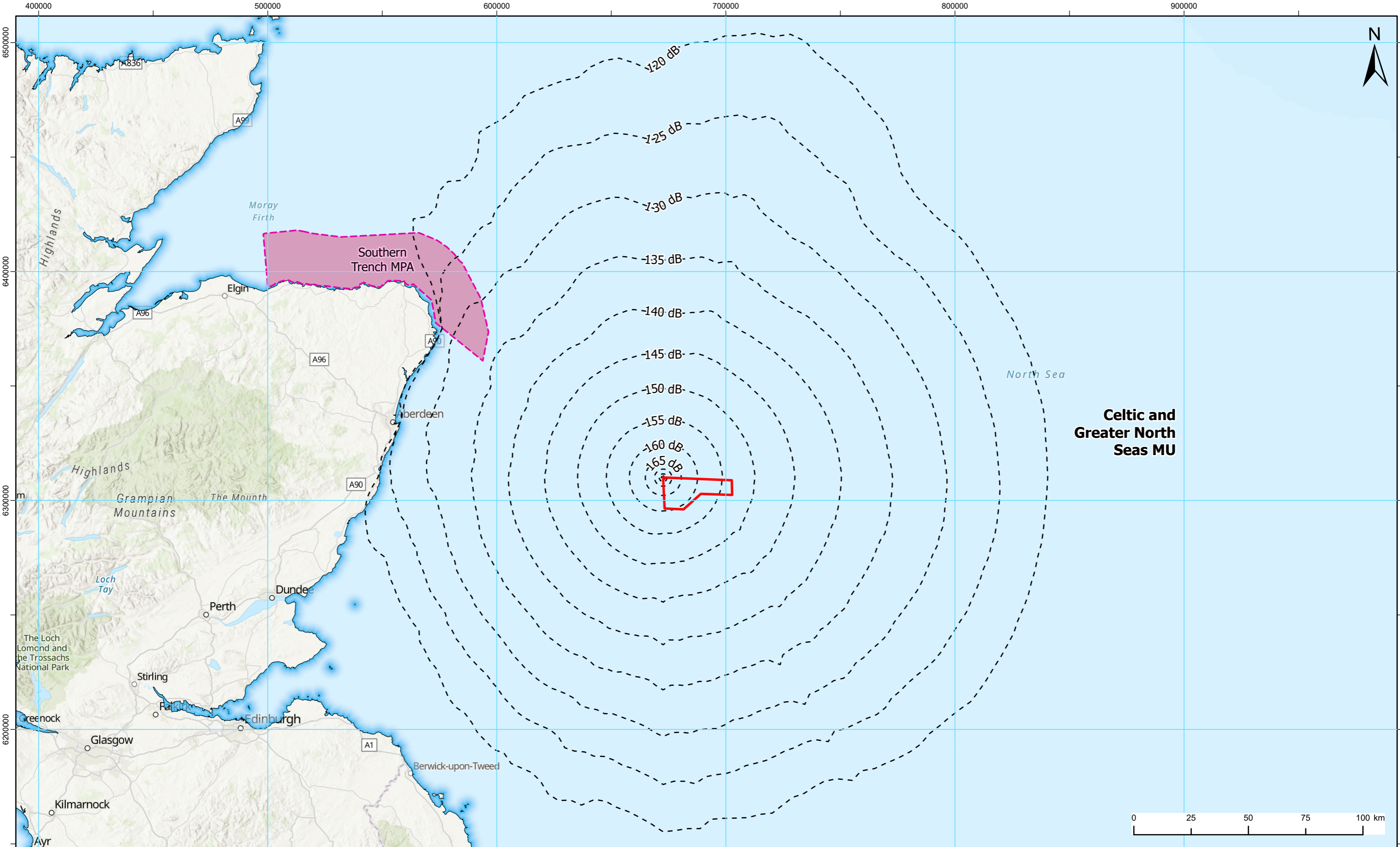
- Coastal East Scotland MU
- Greater North Sea MU

1	31/03/2026	Final	DL	SA	BMCG
REV	DATE	STATUS	DRW	CHK	APR
Coordinate System: WGS 1984 UTM Zone 30N					
Source: Esri, CGIAR, N Robinson, NCEAS, USGS, Sources: Esri, TomTom, Garmin, FAO, NOAA, USGS, © OpenStreetMap contributors, and the GIS User Community, © Haskoning UK Ltd, 2026.					
Scale @ A3			1:1,500,000		

Figure Title: **Contour Plots for Dolphin Species as a Result of Concurrent Installation of a Driven Pile at the NW Corner and E-midpoint (3,000 kJ) of the Bellrock Wind Farm Development Area**

Project: Bellrock Wind Farm Development Area (WFDA)      Report: EIA Report Chapter 9: Marine Mammals

Drawing No.: RHDV\_BEL\_CST\_REP\_0003\_071      **Figure 9.2**

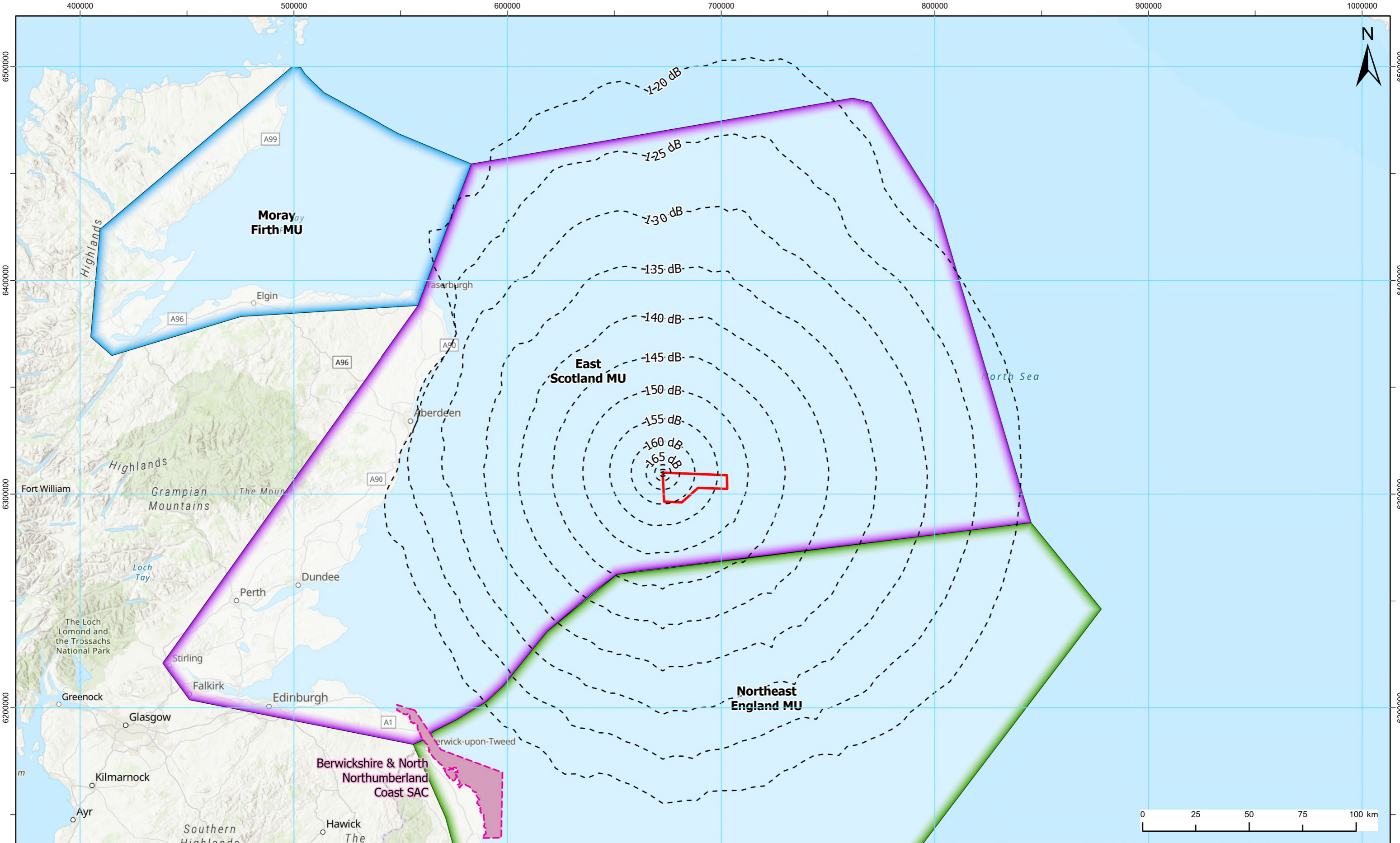


**Legend:**

- Bellrock Wind Farm Development Area
- BelTLP NW Unwtd SELs (5 dB)
- Southern Trench Marine Protected Area
- Minke Whale Management Units (MU)

1	31/03/2026	Final	DL	SA	BMcG
REV	DATE	STATUS	DRW	CHK	APR
Coordinate System: WGS 1984 UTM Zone 30N					
Source: Esri, TomTom, Garmin, FAO, NOAA, USGS, © OpenStreetMap contributors, and the GIS User Community, Esri, USGS, © Haskoning UK Ltd, 2026.					
Scale @ A3			1:1,500,000		

Figure Title: <b>Contour Plots for Baleen Whales as a Result of Concurrent Installation of a Driven Pile at the NW Corner and E-midpoint (3,000 kJ) of the Bellrock Wind Farm Development Area</b>	
Project: Bellrock Wind Farm Development Area (WFDA)	Report: EIA Report Chapter 9: Marine Mammals
Drawing No.: RHDV_BEL_CST_REP_0003_072	<b>Figure 9.3</b>



- Legend:**
- Bellrock Wind Farm Development Area
  - Special Area of Conservation (SAC)
  - BeTLPL NW Unwtd SELs (5 dB)
- Seal Management Units (MU) Estimated**
- East Scotland MU
  - Moray Firth MU
  - Northeast England MU

1	31/03/2026	Final	DL	SA	BMcG
REV	DATE	STATUS	DRW	CHK	APR
Coordinate System: WGS 1984 UTM Zone 30N					
Source: Esri, CGIAR, N Robinson, NCEAS, USGS, Sources: Esri, TomTom, Garmin, FAO, NOAA, USGS, © OpenStreetMap contributors, and the GIS User Community, © Haskoning UK Ltd, 2026.					
Scale @ A3			1:1,600,000		

**Figure Title:** Contour Plots for Seals as a Result of Concurrent Installation of a Driven Pile at the NW Corner and E-midpoint (3,000 kJ) of the Bellrock Wind Farm Development Area

**Project:** Bellrock Wind Farm Development Area (WFDA)

**Report:** EIA Report Chapter 9: Marine Mammals

**Drawing No.:** RHDV\_BEL\_CST\_REP\_0003\_073

**Figure 9.4**