

**Legend:**

- Bellrock Wind Farm Development Area
- Shipping and Navigation Study Area

REV	DATE	STATUS	DRW	CHK	APR
Rev 1	31/03/26	Final	DS	ES	BMCG

Coordinate System: WGS 1984 UTM Zone 30N  
Source: © Crown Copyright and/or database rights. Reproduced by permission of The Keeper of Public Records and the UK Hydrographic Office ([www.ukho.gov.uk/copyright](http://www.ukho.gov.uk/copyright)).

Figure Title:  
**Shipping and Navigation Study Area**

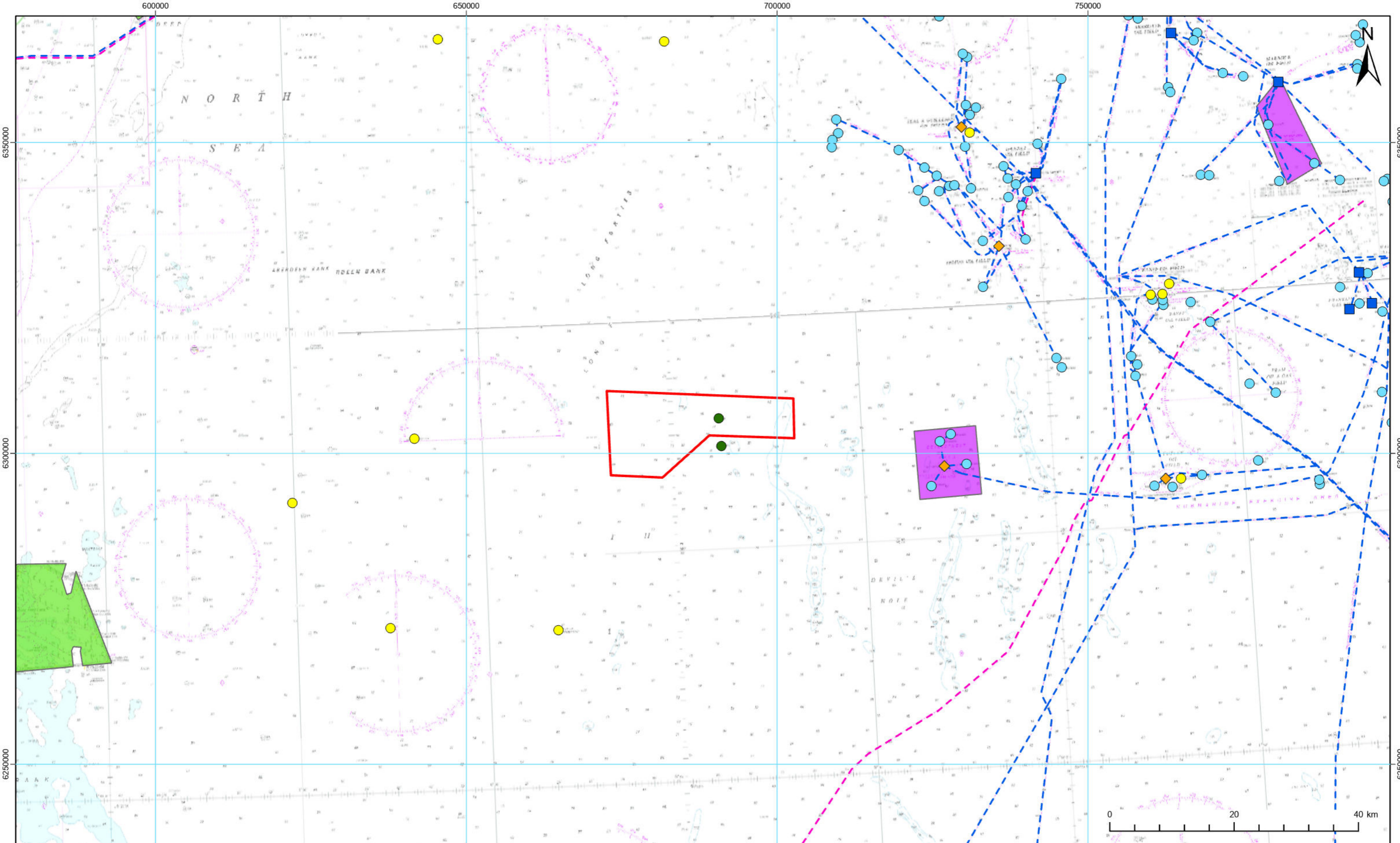
Project:  
Bellrock Wind Farm Development Area (WFDA)

Report:  
EIA Report Chapter 12: Shipping and Navigation

Drawing No.: RHDV\_BEL\_CST\_REP\_0003\_061

Scale @ A3  
1:250,000

**Figure 12.1**

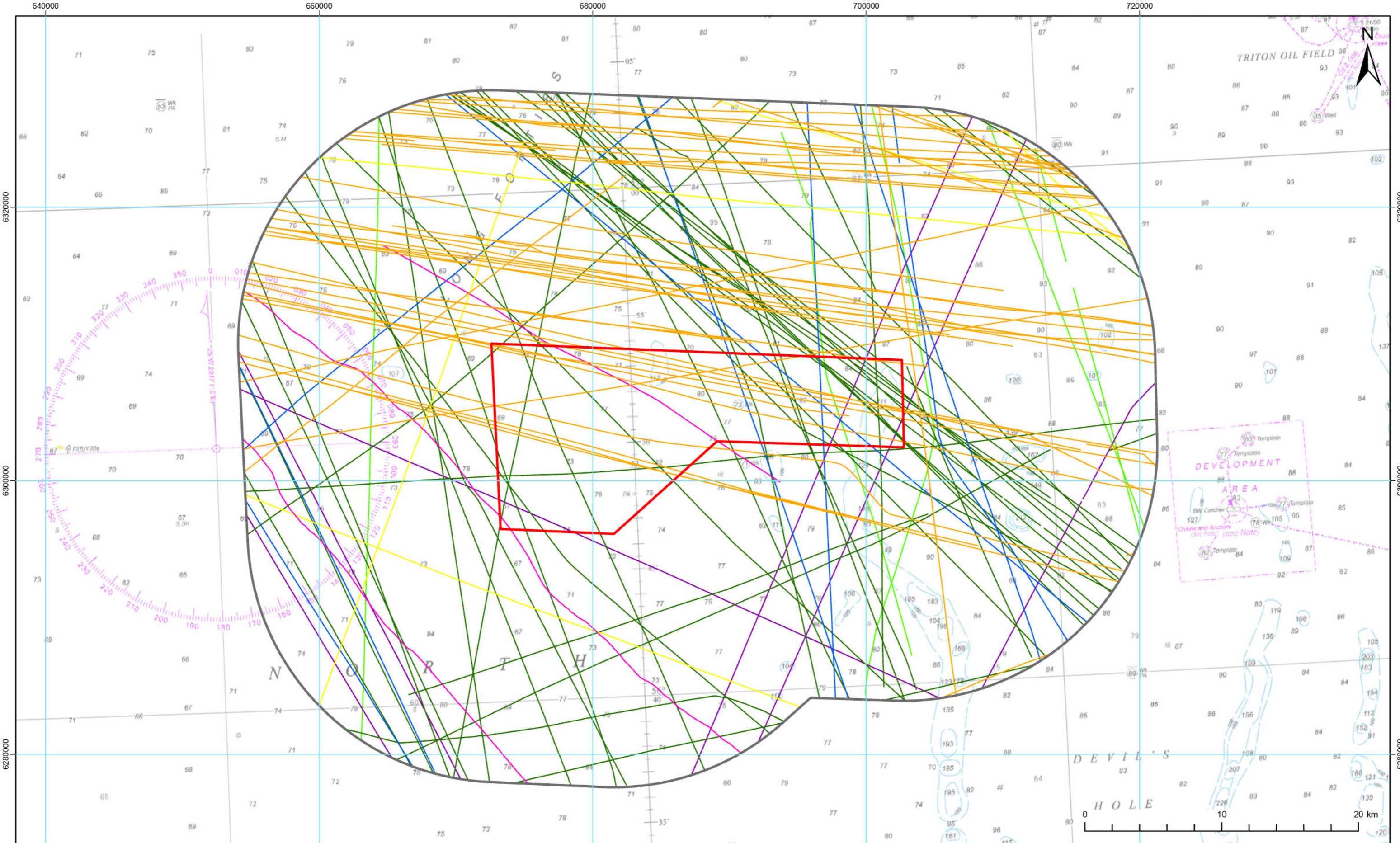


**Legend:**

<span style="border: 2px solid red; display: inline-block; width: 15px; height: 10px;"></span> Bellrock Wind Farm Development Area	<span style="color: blue; font-size: 1.2em;">◆</span> Floating Production Storage and Offloading
<b>Navigational Features</b>	<span style="color: magenta; font-size: 1.2em;">---</span> Subsea Cable
<span style="color: yellow; font-size: 1.2em;">●</span> Aid to Navigation	<span style="color: blue; font-size: 1.2em;">---</span> Subsea Pipeline
<span style="color: green; font-size: 1.2em;">●</span> Key Wreck or Obstruction	<span style="background-color: lightgreen; border: 1px solid green; display: inline-block; width: 15px; height: 10px;"></span> Operational Wind Farm
<span style="color: blue; font-size: 1.2em;">■</span> Surface Platform	<span style="background-color: purple; border: 1px solid purple; display: inline-block; width: 15px; height: 10px;"></span> Oil and Gas Development Area
<span style="color: cyan; font-size: 1.2em;">●</span> Subsea Infrastructure	

Rev 1	31/03/26	Final	DS	ES	BMcG
REV	DATE	STATUS	DRW	CHK	APR
Coordinate System: WGS 1984 UTM Zone 30N					
Source:					
© Crown Copyright and/or database rights. Reproduced by permission of The Keeper of Public Records and the UK Hydrographic Office (www.ukho.gov.uk/copyright).					
Scale @ A3			1:550,000		

Figure Title: <b>Overview of Key Navigational Features</b>	
Project: Bellrock Wind Farm Development Area (WFDA)	Report: EIA Report Chapter 12: Shipping and Navigation
Drawing No.: RHDV_BEL_CST_REP_0003_062	<b>Figure 12.2</b>



**Legend:**

- Bellrock Wind Farm Development Area
- Shipping and Navigation Study Area

**Vessel Type**

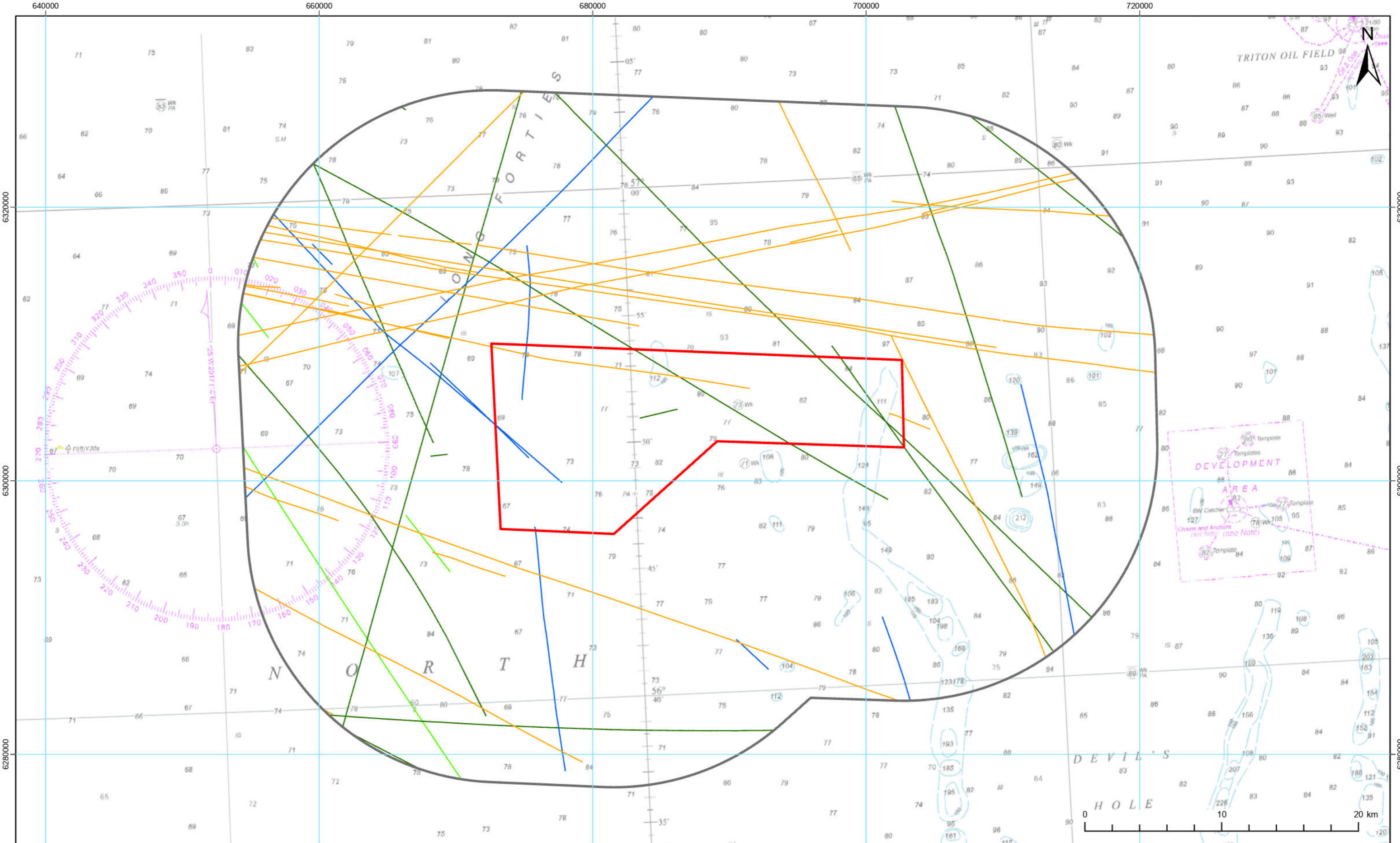
- Cargo
- Tanker
- Other
- Fishing
- Recreational
- Passenger
- Oil and Gas

Rev 1	31/03/26	Final	DS	ES	BMcG
REV	DATE	STATUS	DRW	CHK	APR
Coordinate System: WGS 1984 UTM Zone 30N					
Source: © Crown Copyright and/or database rights. Reproduced by permission of The Keeper of Public Records and the UK Hydrographic Office (www.ukho.gov.uk/copyright).					
			Scale @ A3		
			1:250,000		

Figure Title:  
**14-Day Vessel Traffic Survey Data by Vessel Type (Summer 2024)**

Project: Bellrock Wind Farm Development Area (WFDA)      Report: EIA Report Chapter 12: Shipping and Navigation

Drawing No.: RHDV\_BEL\_CST\_REP\_0003\_063      **Figure 12.3**



- Legend:**
- Bellrock Wind Farm Development Area
  - Shipping and Navigation Study Area

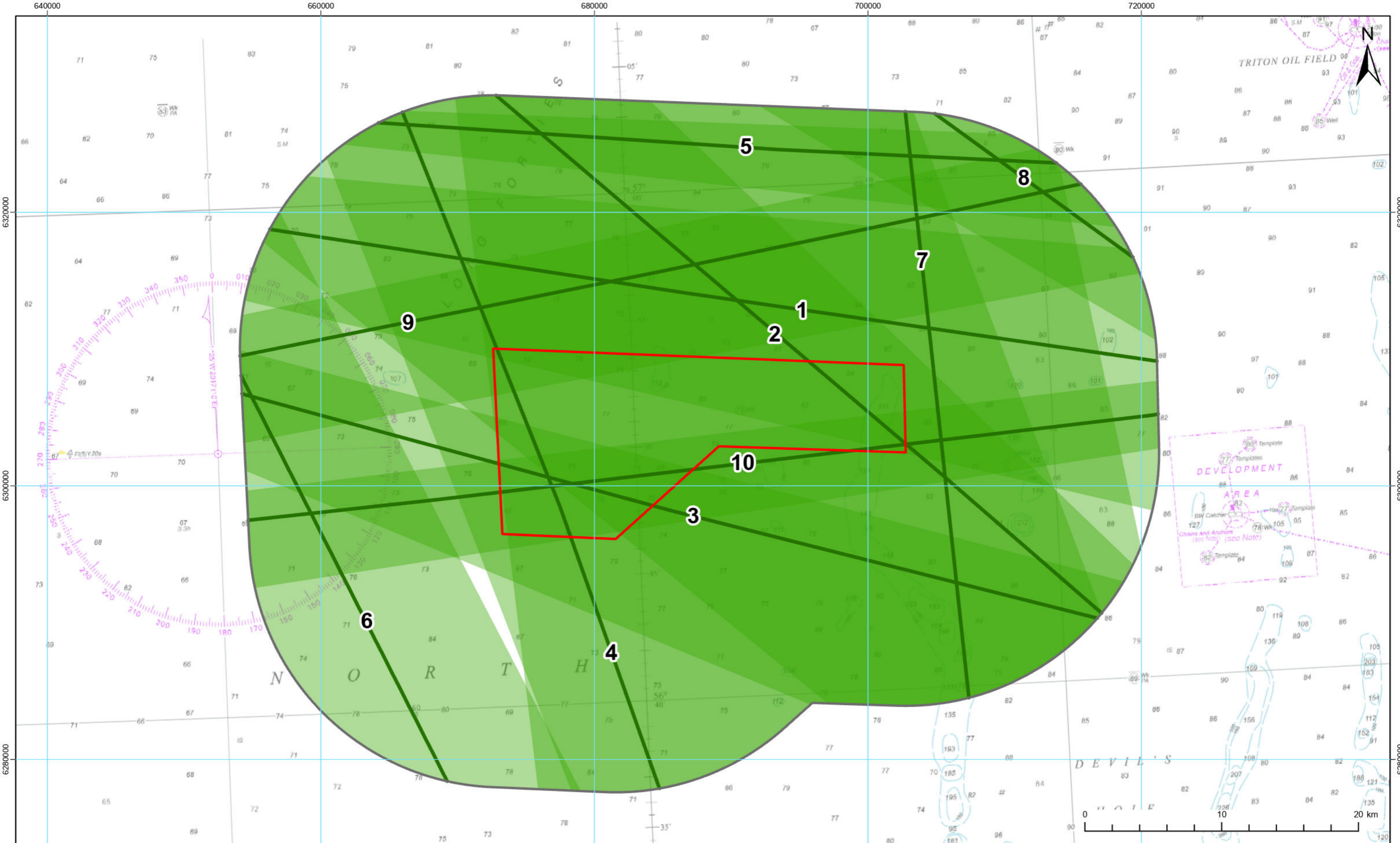
- Vessel Type**
- Fishing
  - Cargo
  - Tanker
  - Oil and Gas

Rev 1	31/03/26	Final	DS	ES	BMcG		
REV	DATE	STATUS	DRW	CHK	APR		
Coordinate System: WGS 1984 UTM Zone 30N							
Source: © Crown Copyright and/or database rights. Reproduced by permission of The Keeper of Public Records and the UK Hydrographic Office (www.ukho.gov.uk/copyright).							
				Scale @ A3			
				1:250,000			

Figure Title:  
**14-Day AIS Vessel Traffic Data by Vessel Type (Winter 2024)**

Project: Bellrock Wind Farm Development Area (WFDA)      Report: EIA Report Chapter 12: Shipping and Navigation

Drawing No.: RHDV\_BEL\_CST\_REP\_0003\_064      **Figure 12.4**

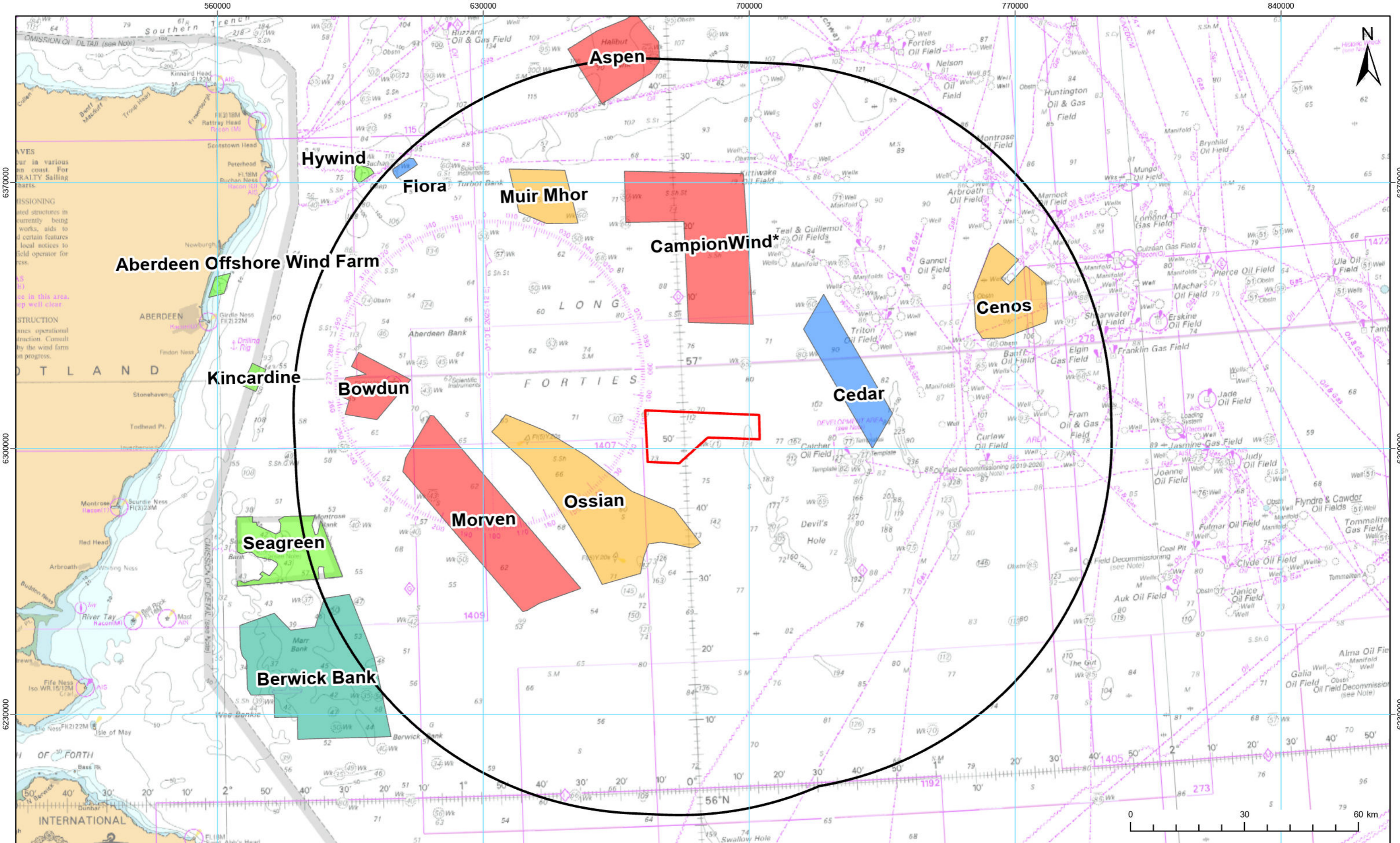


**Legend:**

- Bellrock Wind Farm Development Area
- Shipping and Navigation Study Area
- Main Commercial Route Mean Position
- 90<sup>th</sup> Percentile Route Width

Rev 1	31/03/26	Final	DS	ES	BMcG
REV	DATE	STATUS	DRW	CHK	APR
Coordinate System: WGS 1984 UTM Zone 30N			Scale @ A3		
Source:			1:250,000		
© Crown Copyright and/or database rights. Reproduced by permission of The Keeper of Public Records and the UK Hydrographic Office (www.ukho.gov.uk/copyright).					

Figure Title:					
<b>Main Commercial Routes - Mean Route Positions and 90<sup>th</sup> Percentile Route Widths</b>					
Project:			Report:		
Bellrock Wind Farm Development Area (WFDA)			EIA Report Chapter 12: Shipping and Navigation		
Drawing No.: RHDV_BEL_CST_REP_0003_065				<b>Figure 12.5</b>	



**Legend:**

- Bellrock Wind Farm Development Area
- 50 nm Buffer

**Development Phase**

- Consent Application Submitted
- Consented
- In Planning
- Operational
- Scoped

\*CampionWind has surrendered its Option to Lease Agreement to Crown Estate Scotland.

REV	DATE	STATUS	DRW	CHK	APR
Rev 1	31/03/26	Final	DS	ES	BMcG

Coordinate System: WGS 1984 UTM Zone 30N  
 Source: © Crown Copyright and/or database rights. Reproduced by permission of The Keeper of Public Records and the UK Hydrographic Office (www.ukho.gov.uk/copyright).

Scale @ A3  
 1:900,000

Figure Title:  
**Cumulative Developments within 50 nm of Bellrock WFDA**

Project: Bellrock Wind Farm Development Area (WFDA)

Report: EIA Report Chapter 12: Shipping and Navigation

Drawing No.: RHDV\_BEL\_CST\_REP\_0003\_066 **Figure 12.6**