

Easterfield, Inverness

Glen Gyle, two-bedroom home - from £123,000

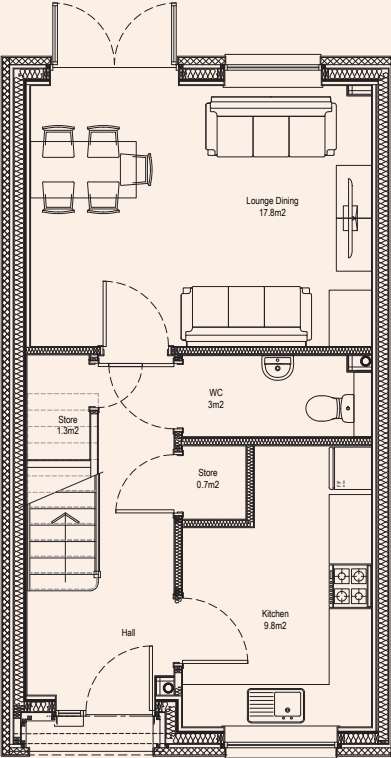
We are delighted to offer these brand new, two-bedroom homes under the Scottish Government's NSSE New Supply Shared Equity Scheme.



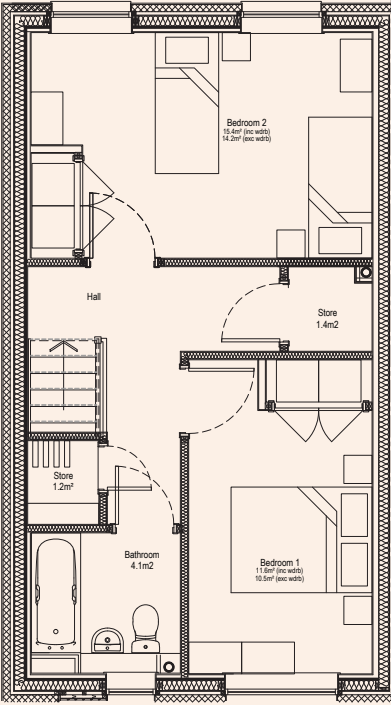
Drumossie Braes is situated just three miles southeast of Inverness city centre, offering breathtaking views of the Moray Firth and the Black Isle. With a selection of two-bedroom apartments and three, four, and five bedroom family homes, allowing contemporary living in a peaceful setting.

Drumossie Braes is designed to create a strong sense of community, with amenity areas such as open spaces, walking trails, natural play areas and areas surrounded by mature woodlands.

Floor plan



GROUND FLOOR



FIRST FLOOR

Total floor area - 87.8m²

Lounge/Dining - 17.8m²

Kitchen - 9.8m²

WC - 3m²

Bedroom 1 - 11.6m²

Bedroom 2 - 15.4m²

Bathroom - 4.1m²

Property information

- Parking
- Air source heating
- Private, grassed rear garden
- Integrated wardrobes in all bedrooms
- Integrated oven, hob and extractor fan
- Downstairs WC

Prices & qualifying criteria

House size	House price	Minimum purchase (60%)	Maximum purchase (80%)
2 bed house 4 people	£205,000	£123,000	£164,000

Maximum income criteria applies in the allocation of the shared equity properties. If you have sufficient income to buy one of these properties at the full sale price, then you will not be considered under the New Supply Shared Equity criteria.

Applicants are not permitted to purchase a property which has more than one extra bed space above the needs of the family.

How do I apply?

To find out if you qualify we will need to know details of your income, the size of the mortgage and personal contribution you will be able to make, and information about your household and your current accommodation.



Complete the Shared Equity 'Passport' Application at www.caledoniaha.co.uk/shared-equity-homes/

We will then let you know if you qualify to proceed to the next stage.

Site plan



How to contact us

Telephone 0800 678 1228

Website www.caledoniaha.co.uk

Email shared.equity@caledoniaha.co.uk

Perth Area Office

Unit 4, Saltire House, Whitefriars Crescent, Perth PH2 0PA

Dundee Area Office

118 Strathern Road, Broughty Ferry, Dundee DD5 1JW

Easterfield, Inverness

Dalmore, three-bedroom home - from £156,000

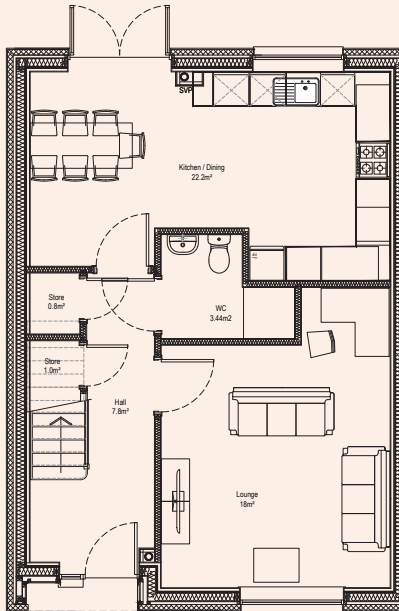
We are delighted to offer these brand new, three-bedroom homes under the Scottish Government's NSSE New Supply Shared Equity Scheme.



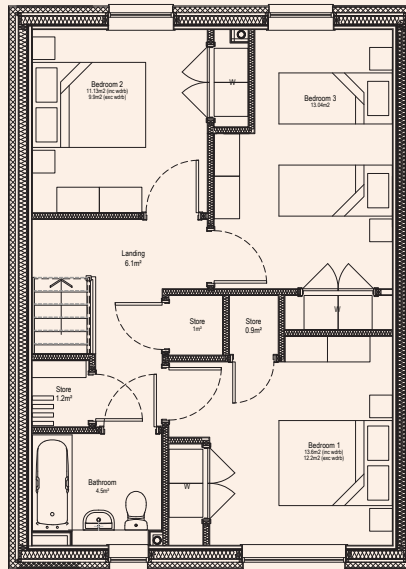
Drumossie Braes is situated just three miles southeast of Inverness city centre, offering breathtaking views of the Moray Firth and the Black Isle. With a selection of two-bedroom apartments and three, four, and five bedroom family homes, allowing contemporary living in a peaceful setting.

Drumossie Braes is designed to create a strong sense of community, with amenity areas such as open spaces, walking trails, natural play areas and areas surrounded by mature woodlands.

Floor plan



GROUND FLOOR



FIRST FLOOR

Total floor area - 114.2m²

Kitchen/Dining - 22.2m²

Lounge - 18m²

WC - 3.44m²

Hall - 7.8m²

Bedroom 1 - 13.6m²

Bedroom 2 - 11.13m²

Bedroom 3 - 13.04m²

Bathroom - 4.5m²

Property information

- Parking
- Air source heating
- Private, grassed rear garden
- Integrated wardrobes in all bedrooms
- Integrated oven, hob and extractor fan
- Downstairs WC

Prices & qualifying criteria

House size	House price	Minimum purchase (60%)	Maximum purchase (80%)
3 bed house 6 people	£260,000	£156,000	£208,000

Maximum income criteria applies in the allocation of the shared equity properties. If you have sufficient income to buy one of these properties at the full sale price, then you will not be considered under the New Supply Shared Equity criteria.

Applicants are not permitted to purchase a property which has more than one extra bed space above the needs of the family.

How do I apply?

To find out if you qualify we will need to know details of your income, the size of the mortgage and personal contribution you will be able to make, and information about your household and your current accommodation.



Complete the Shared Equity 'Passport' Application at www.caledoniaha.co.uk/shared-equity-homes/

We will then let you know if you qualify to proceed to the next stage.

Site plan



How to contact us

Telephone 0800 678 1228

Website www.caledoniaha.co.uk

Email shared.equity@caledoniaha.co.uk

Perth Area Office

Unit 4, Saltire House, Whitefriars Crescent, Perth PH2 0PA

Dundee Area Office

118 Strathern Road, Broughty Ferry, Dundee DD5 1JW