



Westportlea

WESTPORTLEA

162 South Street, St Andrews.



WESTPORTLEA

162 South Street, St Andrews.



WESTPORTLEA

162 South Street, St Andrews.



WESTPORTLEA

162 South Street, St Andrews.



WESTPORTLEA

162 South Street, St Andrews.



WESTPORTLEA

162 South Street, St Andrews.

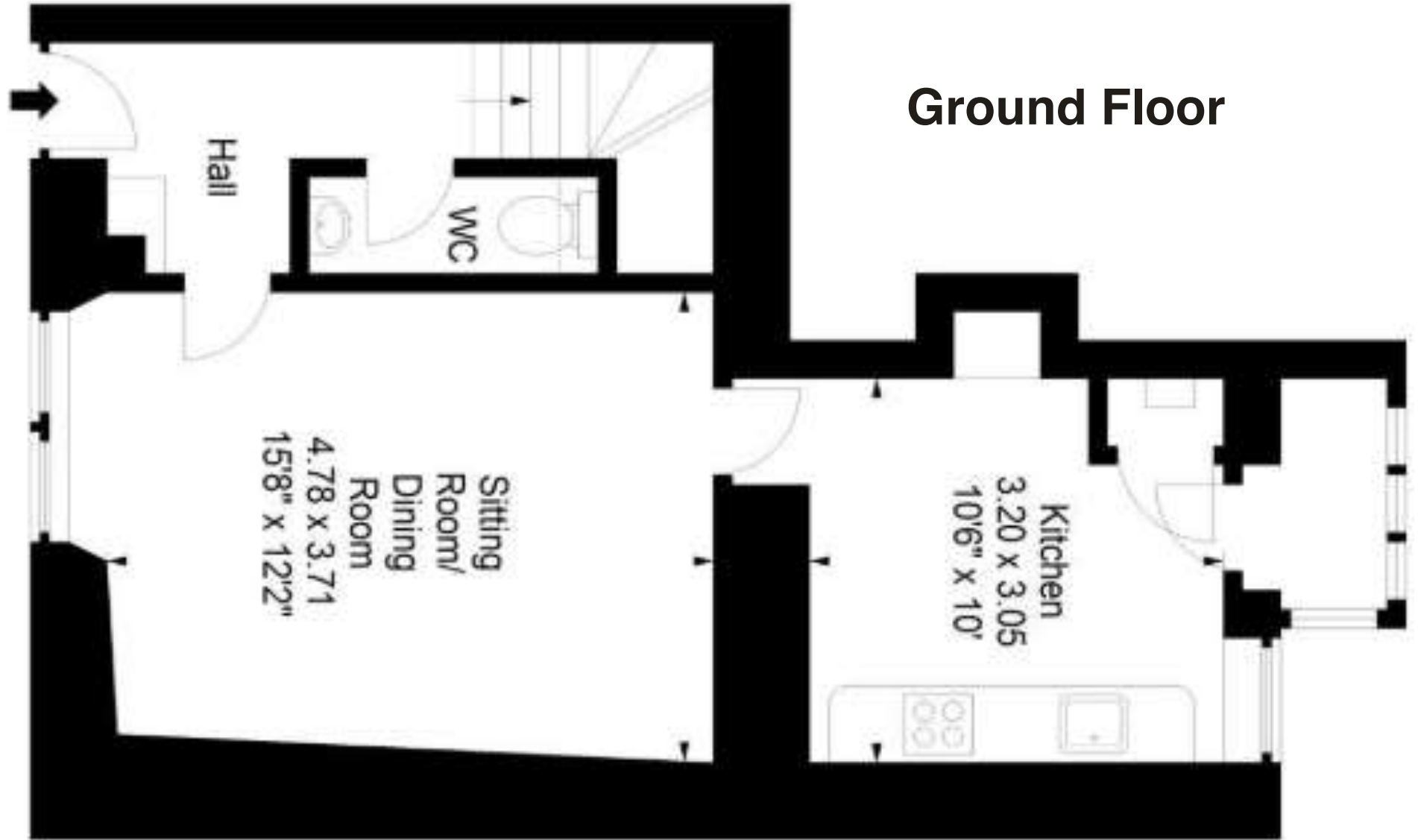


WESTPORTLEA

162 South Street, St Andrews.

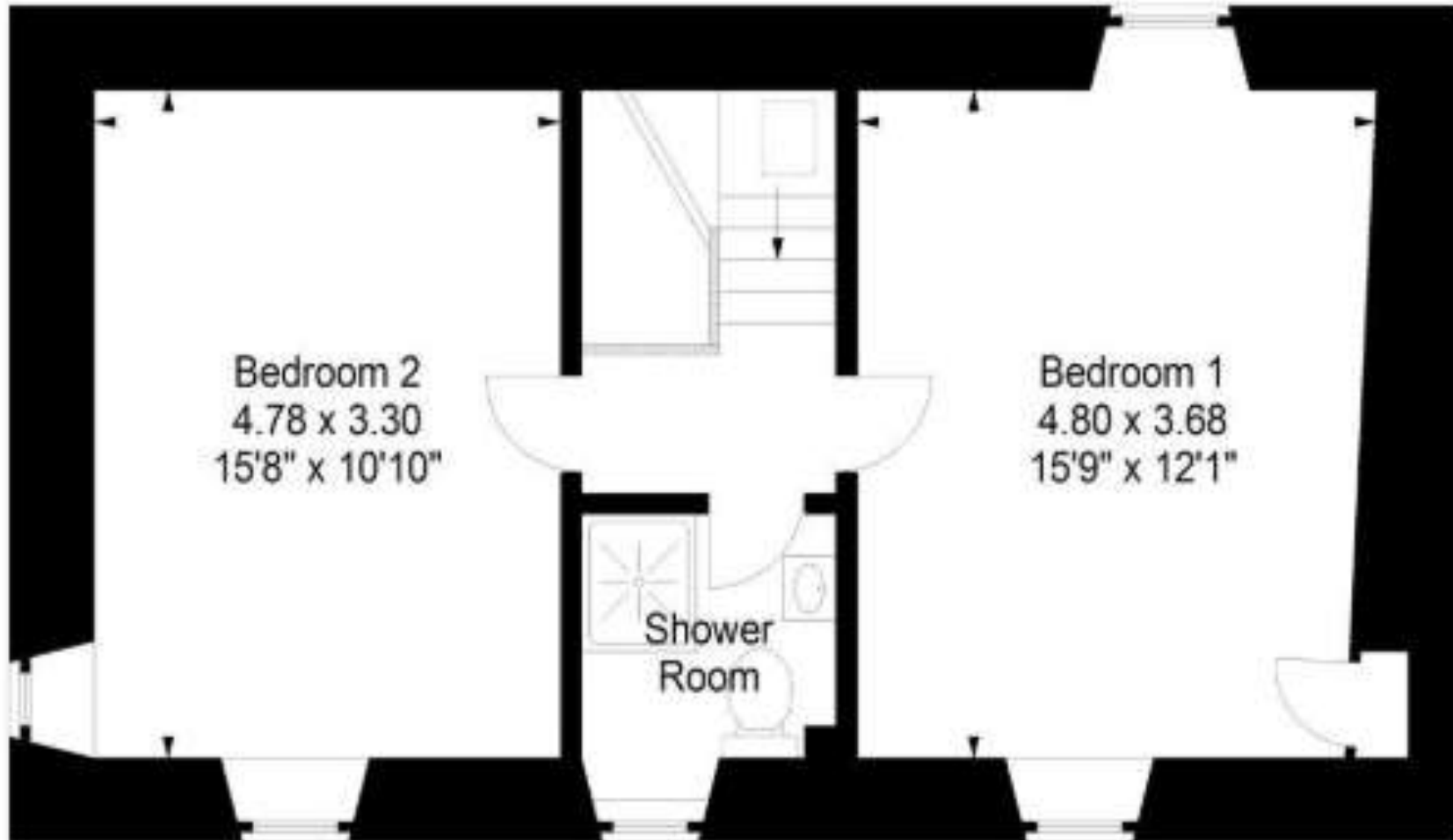


Room	Dimension
Lounge	3.5mtr x 4.74mtr
Kitchen	3.0mtr x 3.05mtr
Utility Room	1.85mtr x 1.1mtr



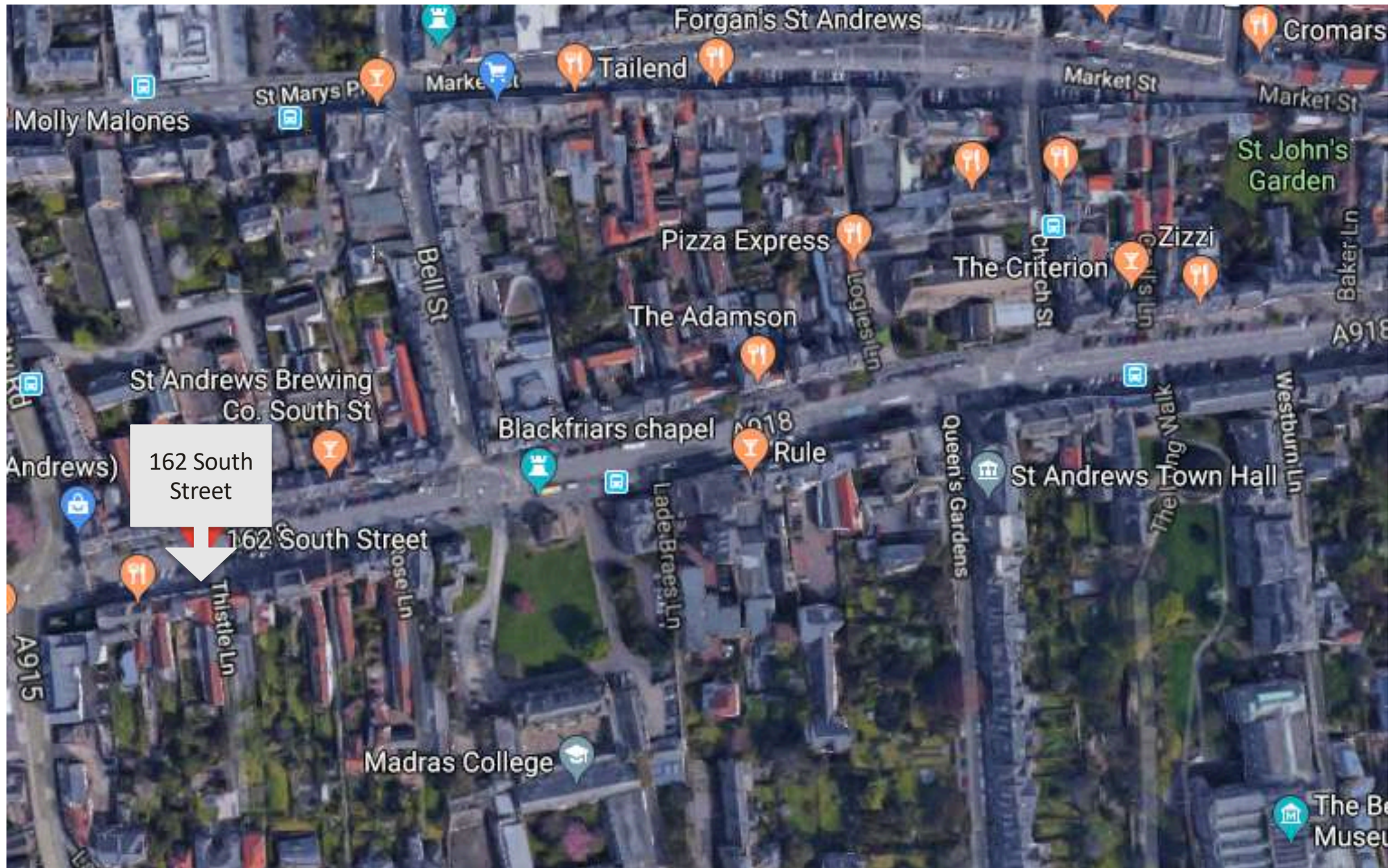
Ground Floor

Room	Dimension
Bedroom 1	3.3mtr x 4.73mtr
Bedroom 2	3.5mtr x 4.73mtr
Shower Room	1.78mtr x 1.87mtr



First Floor

Location Map



WESTPORTLEA

162 South Street, St Andrews

by Eastacre

162 South Street is a newly completed project by the team at Eastacre. This beautifully crafted house is part of a high specification renovation of an original building on the historic South Street in St Andrews. Set over two floors and located centrally in the town centre.

Comprising, two large double bedrooms, a spacious, modern and light shower room, a further cloakroom/WC. A spacious and well presented living room, and a modern kitchen and utility area.

PURCHASE PROCESS

The property has been valued and has a home report value of £520,000. Eastacre will therefore be looking at offers over £500,000 to be send to our lawyer, who's details are below.

We will be looking to set a closing date for offers in the coming days, and offers should be submitted to;

Kyle Moir of MacRoberts Solicitors
Email: Kyle.moir@macroberts.com
DD: 01382 339356

River Court, 5 West Victoria Dock Road, Dundee, DD1 3JT.

Viewings can be arranged via Iain Landsburgh at Eastacre, contact details below;

iain@eastacre.org

Telephone:- 01334 470 366 or 07920 721 283

LEGAL INFORMATION

Westportlea will be sold as seen.

A LUXURY UPGRADE BY

EASTACRE
St Andrews

47 SOUTH STREET
ST ANDREWS
FIFE KY16 9QR

Tel: 01334 470 366
WWW.EASTACRE.ORG