



**BRINGING
LEARNING
TO LIFE**



Strategic Plan

2025-2030



Sub-strategy: Our Student Experience



Our Ambition

At NESCol we are committed to offering an innovative, inclusive, welcoming, well-informed, supportive, transformative and sector-leading student experience that empowers every student to achieve their full potential to excel in a dynamic and evolving world.

Linked to Strategic Objectives - 1.1, 1.2, 1.4, 2.1, 2.2, 2.3, 2.4, 3.1, 3.2, 3.3, 3.4, 4.2, 5.1, 5.3.
(see table in main strategic plan document).

Student Learning Experience (SLE) model



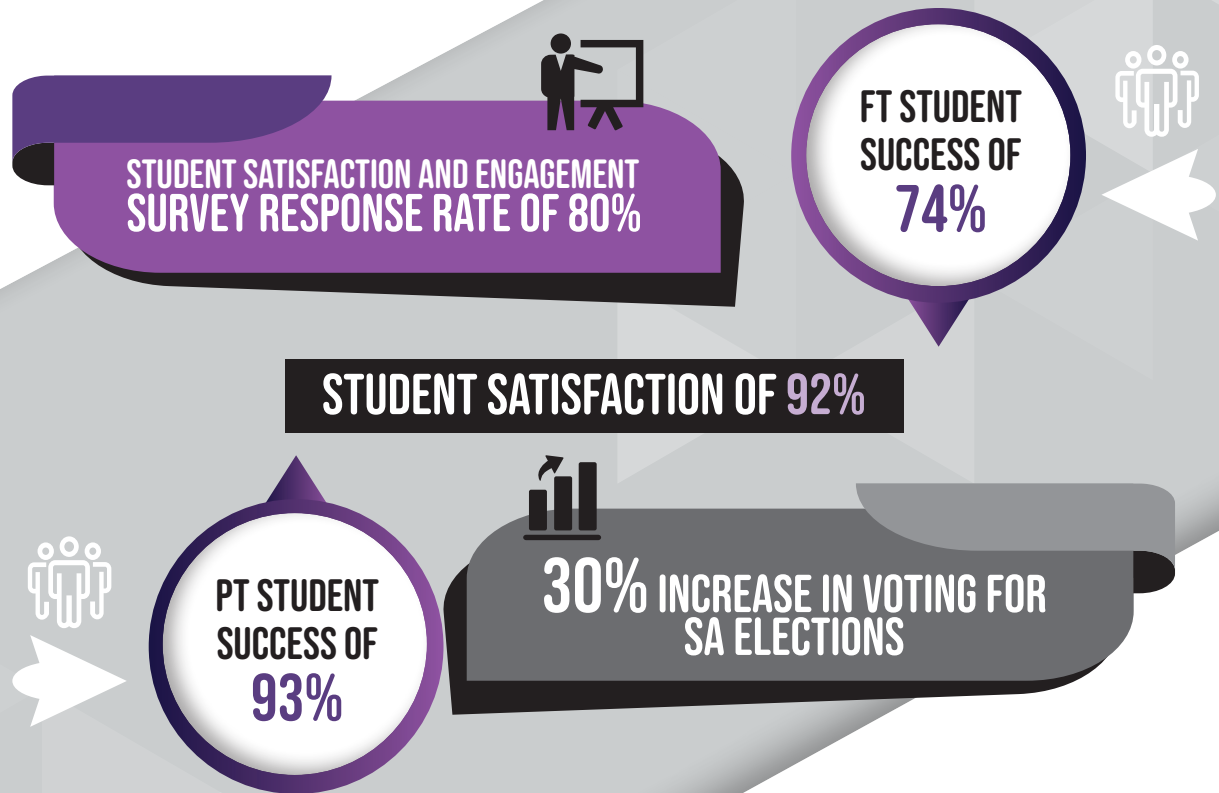
Key Objectives

1. To transform learning and teaching by implementing high impact strategies that are aligned with the sparqs Student Learning Experience model. This includes harnessing cutting-edge technology and innovation to deliver an inclusive and future ready curriculum, positioning NESCol as the first-choice destination for student engagement, skills development, success and real-world impact.
2. To embed a sustainable, trauma informed college-wide support model that ensures every student experiences a smooth transition to and from college, is guided onto the right pathway, and enjoys a learner journey in a welcoming, inclusive, and safe environment that empowers personal growth and success.
3. To enhance learning and social experiences that foster positive mental, physical, and social wellbeing – cultivating resilience, belonging, and community, and inspiring students to thrive throughout their learner journey at NESCol and beyond.
4. To champion the student voice by embedding co-creation, representation, and respect at the heart of NESCol's culture – building a trusted partnership that shapes every level of the student experience.



What does success look like?

By 2030 we will have:



How will we achieve this?

Transform learning and teaching

- **Co-creating the future curriculum** – We will, In partnership with students and key stakeholders, continuously review and redesign curriculum components that no longer meet standards of quality, adaptability, or industry relevance.
- **Enhancing the skills of colleagues and the practices of the College** – We will be progressive in our approach to development, exploring new opportunities to support staff in building knowledge and skills as well as embracing innovative and inclusive academic practices.



Embed a sustainable, trauma informed college-wide support model

- **Mainstreaming equality** – We will continue to work in partnership to embed equality and broaden opportunities for individuals with lived experience of systemic barriers across our curriculum.
- **Transitions and data sharing** – We will refine our approach to supporting effective transitions into and out of college for diverse learners by developing clear and relevant pathways, promoting career management skills, and establishing robust data-sharing agreements to enable a seamless and positive learner journey

Enhance learning and social experiences

- **Encouraging students to be active** – We will continue to develop activity that enriches the learner journey by promoting physical activity, mental wellbeing, and social connection across all college spaces.
- **Nurturing the College community** – We will build a vibrant college community where students are at the centre of everything we do.



Champion the student voice

- **Empowering the NESCol Students' Association** – We will support the Students' Association to grow its brand, strengthen its voice, and expand its impact across the learner journey.
- **Partnership in enhancement** – We will embed student co-design in departmental and college-wide self-evaluation and enhancement planning, ensuring that learners are active contributors to shaping their educational experience.

