



Specification and Care Guide

Sekers Fabrics Ltd., 7A Nobel Road, Wester Gourdie Industrial Estate, Dundee, DD2 4UH

Sales Telephone: 01946 517501 Sales Fax: 01946 517502

E.mail: sales@sekers.co.uk Website: www.sekersfabrics.co.uk

Collection

CALYPSO

Design

Alanya, Derna, Tarsus

Width

140 cm

Composition

Alanya 59% Polyester, 41% Cotton
Derna 90% Polyester, 10% Cotton
Tarsus 64% Polyester, 36% Cotton

Usage

Upholstery

Flammability

BS EN 1021 -1 & -2
BS5852 Part 2 Ignition Source 5 (Crib 5),

BS7176 Medium Hazard,

I.M.O FTPC Part 8 (Upholstery),

CAL 117-13 standard. (Upholstery),

NFPA 260 Class 1 (UFAC) standard. (Upholstery)

Recommended Care



For detailed spot cleaning instructions, please see attached

Abrasion

Alanya - Martindale 100,000 // Wyzenbeek 50,000 double rubs (cotton duck)

Derna - Martindale 80,000 // Wyzenbeek 50,000 double rubs (cotton duck)

Tarsus - Martindale 100,000 // Wyzenbeek 50,000 double rubs (cotton duck)

CALYPSO CLEANING AND MAINTENANCE INSTRUCTIONS

AQUACLEAN TECHNOLOGY

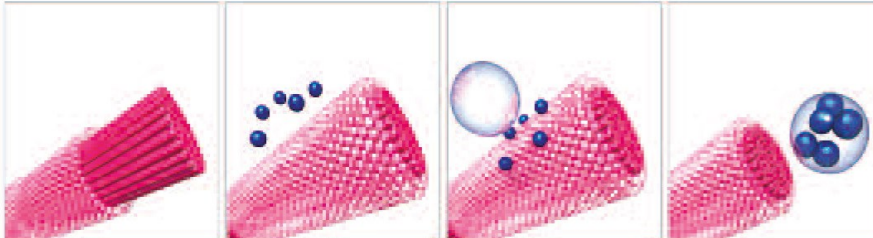
ADVANCED UPHOLSTERY PROTECTION

1. The AquaClean treatment system covers every single fibre with an invisible molecular coating.

2. Dirt doesn't penetrate the fabric's fibres.

3. The stains just disappear on applying water.

4. Simply remove with a lint free white cloth.



CLEAN WITH WATER IN THREE EASY STEPS



1. Remove any excess product that has spilled on the fabric.



2. Apply water to the stain, either directly or using paper tissues or an absorbent cloth, without making the upholstery too damp. Wait for a few seconds.



3. Press the stain with the paper tissues or cloth, then gently rub the fabric with circular movements. If the stain does not disappear completely, repeat the process as many times as necessary.



The cleaning technology eliminates small wine stains, coffee, food and even some markers without resorting to washing with soap, however large stains may require dry cleaning.

MAINTENANCE

For routine maintenance of your fabric we recommend vacuuming of the entire surface using a domestic vacuum cleaner with brush adaptor.